

# Determinants of invasive species policy: Print media and agriculture determine U.S. invasive wild pig policy

RYAN S. MILLER,<sup>1,2,†</sup> SUSAN M. OPP,<sup>3</sup> AND COLLEEN T. WEBB<sup>2</sup>

<sup>1</sup>*Veterinary Services, Center for Epidemiology and Animal Health, USDA, APHIS, 2150 Centre Avenue, Fort Collins, Colorado 80526 USA*

<sup>2</sup>*Department of Biology, Colorado State University, Fort Collins, Colorado 80523 USA*

<sup>3</sup>*Department of Political Science, Colorado State University, Fort Collins, Colorado 80523 USA*

**Citation:** Miller, R. S., S. M. Opp, and C. T. Webb. 2018. Determinants of invasive species policy: Print media and agriculture determine U.S. invasive wild pig policy. *Ecosphere* 9(8):e02379. 10.1002/ecs2.2379

**Abstract.** Conflicts between wildlife, invasive species, and agricultural producers are increasing. Although direct management actions taken to mitigate these conflicts remain controversial, most stakeholders agree that better policies are needed to balance socioeconomic considerations with invasive species management, wildlife conservation, and agriculture. However, the interaction between societal and biological drivers that influence human–invasive species–wildlife conflict mitigation policy is poorly understood. We identify factors influencing policy leading to the establishment of a new federal program to control invasive wild pigs (IWPs) in the United States. We fit generalized linear models relating frequency of congressional policy activity, such as congressional hearings and reports, to frequency of print newspaper media and percent of the U.S. agricultural industry co-occurring with IWPs for 29 yr preceding the establishment of the federal program in 2013. Our models explained 89% of the deviance in congressional policy activity indicating a strong linkage between congressional IWP policy activity and predictors representing the number of negative of newspaper articles, geographic distribution of print media, and percent of agricultural producers co-occurring with IWPs. These effects translated to 3.7% increase in the number of congressional policy actions for every additional five states with negative news media. Invasive wild pig congressional policy activity increased 6.7% for every additional 10 negative newspaper articles. Increases in co-occurrence of agriculture and IWPs had the largest effect; for every 1% increase in co-occurrence, there was a 41% increase in congressional policy activity. Invasive wild pig congressional policy activity that explicitly addressed livestock increased at nearly twice the rate of policy activity addressing crop agriculture. These results suggest that agriculture and media coverage may act as determinants for invasive species policy. Our approach may provide early insight into emerging policy areas enabling proactive policy development by agencies or early engagement by scientists to find solutions before the policy area becomes gridlocked. Our results can also support policy and program evaluation providing a means of determining if the implemented policies match the original policy determinants ensuring best alignment with public, environmental, and stakeholder interests.

**Key words:** agriculture; conflict; feral swine; human; invasive; livestock; model; policy; policy making; USA; wild pig; wildlife.

**Received** 12 October 2017; revised 2 May 2018; accepted 11 July 2018. Corresponding Editor: George Middendorf.

**Copyright:** © 2018 The Authors. This is an open access article under the terms of the Creative Commons Attribution License, which permits use, distribution and reproduction in any medium, provided the original work is properly cited.

† **E-mail:** ryan.miller@rsmiller.net

## INTRODUCTION

Conflicts between wildlife, invasive species, and agricultural producers are increasingly challenging management agencies (Krebs et al. 1998, Miller and Sweeney 2013, Miller et al. 2013). Policy to address human–wildlife–invasive species conflicts is often controversial (Messmer 2009, Crowley et al. 2017). Although policies to manage interactions among invasive species, wildlife, and agriculture have been identified as critically important (Jones et al. 2013, Paini et al. 2016) and there have been focal studies (McBeth and Shanahan 2004, Kokotovich and Andow 2017), little research has been conducted to identify societal factors that stimulate federal policy development to address these conflicts. This gap is particularly evident for invasive species conflicts which can have complex societal and management drivers (Estévez et al. 2015, Crowley et al. 2017). The drivers that often influence policy development to address social problems include problem severity, interest group involvement, media coverage, and public perceptions (Gilliam and Iyengar 2000, Soroka 2003, Walgrave et al. 2008, Baumgartner and Jones 2010).

Agriculture and wildlife policy development is often exacerbated by invasive or exotic animals (Pimental 2007). North America and in particular the United States has the greatest number of non-native invasive species globally, causing an estimated \$46 billion in damage annually (Pimental 2007, Turbelin et al. 2017). The invasive wild pig (IWP) *Sus scrofa*, often referred to as feral hog, feral pig, feral swine, or wild boar, are the most abundant free-ranging, exotic ungulate in the United States and are the descendants of Eurasian Russian boar (*Sus scrofa linnaeus*), feral domestic swine (*Sus scrofa domestica*), and hybrids between the two (Mayer and Brisbin 1991, Keiter et al. 2016). Since the 1960s, IWPs have expanded their range to at least 38 states and three provinces in Canada impacting ecosystems, wildlife, and agriculture (Bevins et al. 2014, Brook and Beest 2014, Michel et al. 2017, Miller et al. 2017). Environmental and agricultural damage caused by IWPs is at least US\$1.5 billion annually (Pimental 2007, Bevins et al. 2014, Anderson et al. 2016). The rooting behavior and omnivorous diet of IWPs can have ecosystem-level effects on native plant and wildlife communities and have complicated

threatened and endangered species conservation with at least 87% of imperiled species potentially impacted in the United States (Barrios-Garcia and Ballari 2012, McClure et al. 2018).

There is a diversity of public attitudes toward IWPs depending on whether the animals are seen as pests, disease hazard, commodity, source of income, or recreational resource (Tisdell 1982, Izac and O'Brien 1991, Caplenor et al. 2017). Economic impacts and perceived problem severity often differ regionally. Despite economic costs, IWPs are also valued as an economically important hunting resource with 35 states currently allowing public hunting, and in 11 states, IWPs are under the jurisdiction of the state game and fish agency (Centner and Shuman 2015, Wild Hog Working Group 2016, Caplenor et al. 2017). Izac and O'Brien (1991) found that these perceptions changed with location, over time, and how an individual may be affected. This diversity of public opinion influences public discourse concerning how IWPs should be managed subsequently affecting institutional (e.g., governmental agencies) problem identification and implementation of policies to control or mitigate the damage caused by IWPs.

Conflict over public policies can be decomposed into the scope of participation by affected parties and how the problem and its solutions are perceived (Schattschneider 1960). These two aspects of policy conflict are useful in understanding the relative contribution of interest groups and public perception of the problem to policy development. Extensive work in the policy analysis literature indicates that identifying the visible, and presumably most affected (often economically affected), participants in a policy issue is central to understanding why some policy problems receive attention by governmental institutions resulting in policy development (Kingdon and Thurber 1984, Baumgartner and Jones 1991, 2010, Jones and Baumgartner 2004, Baumgartner et al. 2009). This is often tied to increasing problem severity that often results in increased lobbying by interest groups and can be a significant stimulus for the adoption of policy innovations (Sapat 2004). The dominant conceptualization of a policy problem and the solutions, often referred to as the policy image, is also important in understanding policy development (Barrilleaux et al. 2017). Media coverage of

public issues—both quantity and tone (i.e., negative or positive)—has been widely recognized as an important driver in shaping national public perception and perceived importance of policies issues thus influencing government institution policy agendas (Gilliam and Iyengar 2000, Walgrave et al. 2008, Baumgartner and Jones 2010). Media coverage is generally thought to affect government policy agendas by increasing the relative salience (i.e., importance) of a particular public issue and increasing policy image coalescence often early in the policy process (Elder and Cobb 1983, Weart 1988, Soroka 2003, Baumgartner and Jones 2010). Salience and coalescence of a policy image is often translated into pressure on government officials to prioritize development of policy solutions.

There is mixed evidence for how these factors—media coverage, public perception, problem severity, and interest groups—may act together to influence policy generation (McCombs and Shaw 1972, Funkhouser and Shaw 1990, Entman 1993, Koch-Baumgarten and Voltmer 2010), and there is generally poor understanding of how they may influence policy addressing conflicts among invasive species, wildlife, and agriculture (McBeth and Shanahan 2004, Lodge and Matus 2014). Our objectives in this study were to characterize the relative contribution of these factors to the development of national invasive species policy. Specifically, we wanted (1) to understand the significance of public policy image on congressional policy activity (e.g., congressional hearings and reports) to address invasive species conflict; (2) to determine the contribution of problem severity and the resulting pressures on government institutions from interest groups to develop policy solutions; and (3) to identify predictors of policy activity for informing invasive species management and policy, specifically program assessments and new program development. To investigate these relationships, we use 29 yr of federal congressional policy activity leading to the establishment of the Animal Plant Health Inspection Service (APHIS) National Feral Swine Damage Management Program in 2013 (federal government fiscal year 2014; USDA 2013). The broader goal of this analysis is to provide a mechanistic understanding of factors contributing to invasive species policy enabling improved development of policies to manage conflicts with invasive species.

## METHODS

### *Congressional policy activity data*

A systematic search of the Federal Digital System (FDsys) maintained by the United States Government Printing Office (GPO 2014) was used to generate data describing congressional policy activity related to IWPs. We use the term “policy activity” in its broadest definition referring not only to operational policies of government (e.g., code of federal regulations) but also including all official discourse related to the development of policy (e.g., committee hearings and congressional reports). The FDsys is an official repository of all official publications from all branches of the United States Federal Government and currently contains over 7.4 million electronic documents from 1969 to present. Our search included congressional hearings, congressional record, congressional reports, bills, and changes to the code of federal regulations from 1985 until 2013 when the APHIS National Feral Swine Damage Management Program was established. FDsys documents included in our study contained any of the following search terms: “feral swine,” “feral hog,” or “feral pig,” “wild swine,” “wild hog,” or “wild pig.”

Each document was considered an independent policy action, and the number of documents by year was tallied to generate count data by document type and the primary agricultural commodity (livestock or crop) the document addressed. Our method may have included documents which were not specifically addressing IWP-related policy. Because it was prohibitive to manually assess 476,000 pages of policy documents to evaluate inclusion error, we randomly sampled 5% of the documents to determine whether they addressed IWP policy allowing inclusion error >4.5% with 95% certainty to be detected (Valliant et al. 2013). Based on the results of this assessment, we assumed that if the document contained a reference to IWPs, the issue was either on the policy agenda or influencing the agenda in some way (Baumgartner and Jones 2010).

The policy process is an often nonlinear multi-stage cycle that can be characterized into at least six primary stages that include (1) issue emergence and problem formation, (2) agenda setting, (3) formulation, (4) policy adoption, (5)

implementation, and (6) evaluation (Brewer and DeLeon 1983, Anderson 1984). These six stages often overlap, often have additional hierarchy of stages, and are not always required for policy to be in-acted (Sabatier and Weible 2014). To support our statistical analyses, the policy documents were used to identify the primary policy stages that IWP policy likely experienced. We used the policy stage heuristic to determine the policy stages that IWP policy likely experienced (Brewer and DeLeon 1983, Anderson 1984; Appendix S1). These stages were then used in post hoc analysis of the contribution of our policy model predictors to overall policy activity (see *Methods: Policy models*).

#### *Print media data*

Data on media reporting of IWP-related topics were generated using a search of four major news consolidators—NewsBank, LexisNexis, EBSCO Information Services, and ProQuest (EBSCO 2016, LexisNexis 2016, NewsBank 2016, ProQuest 2016). We used similar search criteria to those used for the policy activity data. Our review was restricted to print newspaper articles (hereafter referred to as articles) published from 1985 to 2013 in the United States contained in these databases. In order for an article to be included, it must have contained the terms “feral swine,” “feral hog,” or “feral pig,” “wild swine,” “wild hog,” or “wild pig” in the title or lead into the article. Articles published by the same newspaper and author on the same date were considered duplicates and removed. The data were tallied by year to generate three annual predictors, the number of articles, the number of different newspapers, and the number of states with at least one article. A state was considered to have an article if the newspaper was located in the state. For national newspapers such as the New York Times, the head office was used to determine the state (e.g., the New York Times would be located in New York).

To generate a measure of article tone, each article headline was classified as positive or negative (see detailed methods in Appendix S2). Our assumption was that the article headline summarized the content and sentiment of the article representing the overall tone of the article and has previously been used as an index of tone (Dodds et al. 2011, 2015). We classified articles as having positive or

negative tone using an index previously described by Rinker (2013) and Liu (2015) using the polarity function in the Qualitative Data and Quantitative Analysis package (Rinker 2013) within the R computing environment (R Core Team 2016). Briefly, the polarity algorithm uses a word sentiment (positive or negative) dictionary to identify and assign a score to polarized words in the article headline (Hu and Liu 2004). The words adjacent to the polarized word, often referred to as the context cluster, are used to weight the score for the polarized word. The weighted scores for each polarized word within the article headline are summed and divided by the square root of the word count for the headline yielding an unbounded score for article tone in which zero is perfectly neutral, positive values indicate positive tone, and negative values indicate negative tone.

We were interested in the annual influence of article tone and newspaper tone on policy activity. To this end, the polarity scores for each article were used to calculate the mean article tone (article tone) in each year across all articles. To calculate the annual mean newspaper tone, we first calculated the mean article tone by newspaper in each year. This represented the mean article tone for each newspaper in each year (i.e., tone of articles published by each newspaper). We then calculated the mean newspaper tone across all newspapers in each year providing a measure of mean annual newspaper tone (newspaper tone). A detailed description of the methods used to generate article and newspaper tone using the polarity index is described in Appendix S2.

#### *Increasing problem severity and interest group pressures*

The most affected participants, often economically, in a policy area often determine policy outcomes (Kingdon and Thurber 1984, Baumgartner and Jones 1991, 2010, Jones and Baumgartner 2004, Baumgartner et al. 2009). Increasing problem severity and economic losses often increase lobbying by interest groups and are considered a primary mechanism of interest group engagement (Sapat 2004). In the case of IWPs, there are several potentially affected interest groups including wildlife conservation, sportsmen, and agriculture. Agriculture likely has the largest economic impacts resulting from IWPs (~US\$1.5 billion) although the economic impacts to sportsmen and

wildlife are not as easily estimated or available (Pimental 2007). We limited our investigation to agricultural interest groups which are likely the most economically affected group.

To generate a measure of potential interest group pressures on governmental institutions (hereafter institutional pressure), we developed a proxy variable describing the co-occurrence of agricultural producers and IWPs. Data describing the nationwide distribution (presence/absence) of wild swine at the county level were compiled from the Southeastern Cooperative Wildlife Disease Study (SCWDS; Corn and Jordan 2017, SCWDS 2013) and two publications (Hanson and Karstad 1959, Waithman et al. 1999). These data represent the known nationwide county-level distribution of IWPs for 39 states and 1521 counties over the past 50 yr and have been used to forecast the spread of IWPs (Snow et al. 2017), estimate the probability of occurrence (McClure et al. 2015), and determine agricultural producers at risk of damage from IWPs (Miller et al. 2017). For each year and county with IWP presence, the number of agricultural producers was determined using the National Agricultural Statistics Service (NASS) data (USDA 2014). Because data describing the distribution of IWPs were not available for all years and represent a sample of the known distribution of IWPs over time, models were fit to these data to estimate the total number of agricultural producers in counties where IWPs occur for each year of policy data (McClure et al. 2018). To improve estimation for earlier years where IWP distribution data are sparse, we used all IWP-producer data to fit the models. We determined relative support in the data using four candidate models—linear, exponential, power, and logistic—to describe the phenomenological change in national co-occurrence of IWPs and agriculture. Akaike information criterion with a correction for small sample size ( $AIC_c$ ) was used to determine the best approximating model. This model was used to predict the mean national proportion of agricultural producers co-occurring with IWPs for each year from 1985 to 2013 and was used as a predictor in the policy models.

#### Policy models

We evaluated support for competing models portraying the relationship between the annual

count of policy actions (response variable) and six variables of interest measuring annually (1) the number of articles, (2) the number of newspapers with articles, (3) the number of states with articles, (4) the tone for articles, (5) the tone for newspapers, and (6) the proportion agricultural producers in regions with IWPs, here on referred to as agriculture. Specifically, these independent variables represent three hypotheses about specific mechanisms that resulted in congressional policy activity that eventually resulted in the establishment of a national program to address the problem.

*Problem salience.*—An increase in the number of articles, newspapers with articles, and the number of states with newspaper articles would increase the salience of the policy image increasing congressional policy actions.

*Problem coalescence.*—An increase in negative newspaper article tone for IWPs represents coalescence of the policy image increasing congressional policy activity.

*Institutional pressures.*—Increasing the number of agricultural producers in IWP regions is related to increasing problem severity and results in increased pressures on Federal government institutions by interest groups (i.e., lobbying) to find a policy solution thus increasing congressional policy activity.

We used multi-model inference within an information-theoretic framework to estimate model parameters describing the probability of congressional policy actions related to IWP co-occurrence with agriculture and media tone (Burnham and Anderson 2002, Burnham et al. 2011). All models used a Poisson error structure and were fit using a generalized linear model (GLM) with a log link function having the form:

$$y_i = \text{Poisson}(\theta_i)$$

where  $y_i$  represents congressional policy actions in year  $i$  and  $\theta_i$  is the Poisson rate parameter representing the mean number of congressional policy actions in a year. The mean number of congressional policy actions,  $\theta_i$ , was a function of covariates on the logarithmic scale represented as:

$$\theta_i = \exp(\alpha + \beta x_i^T)$$

where  $\alpha$  is the intercept describing the estimated background number of congressional policy actions common across years and  $\beta$  is a vector of

regression coefficients corresponding to  $x_i^T$ , the transpose of the of the  $m \times 1$  vector of covariates associated with the  $i$ th year in the congressional policy data.

Among-year correlation in the number of congressional policy actions was investigated using generalized linear autoregressive moving average models (Appendix S3); however, models that accounted for serial dependence in the response variable were not significantly different than a GLM indicating between-year dependence in policy actions was not important; thus, we did not include serial dependence in our models.

Akaike information criterion with a correction for small sample size was used to assess the relative information content of the models. We fit all subsets of the global model and computed model-averaged regression coefficients, unconditional standard errors (SE), cumulative  $AIC_c$  weights of evidence as a measure of variable importance, and 95% confidence intervals (Burnham and Anderson 2002, 2004, Burnham et al. 2011). Because the policy data are over-dispersed, we used a shrinkage estimation approach to produce unconditional model-averaged parameter estimates, in which covariates that did not appear in a particular model subset were assigned coefficients of zero to avoid biasing coefficient estimates away from zero (Burnham and Anderson 2002). Our interpretation of the explanatory power of the regression coefficients in our model was guided by (1) the weights of evidence, ranging from 0 to 1.0, where higher weights indicated greater relative importance; (2) the 95% confidence interval for each regression coefficient that did not overlap zero; and (3) effect sizes indicated by each regression coefficient.

The final inferential model was used to estimate the mean annual contribution of each predictor (i.e., influence on the amount of policy activity in each year) to policy activity across the 29 yr investigated. We also estimate the relative contribution of livestock and crop agriculture to annual federal policy activity for IWPs. Differences in the contribution among predictors to policy activity were determined using Tukey's honestly significant difference test (Kleinbaum et al. 2013) for each of the policy stages identified using the policy documents. Maximum-likelihood estimates, confidence intervals on model parameters, significance statistics, and  $AIC_c$

values were obtained using MuMIn Multi-Model Inference package (Barton and Barton 2015) available in R (R Core Team 2016).

#### *Model assessment and validation*

We assessed model fit using k-fold cross-validation which contrasts the number of policy actions predicted by the model and the observed frequency of policy actions (Kohavi 1995) and calculated adjusted  $D^2$  which is a quality-of-fit statistic (Guisan and Zimmermann 2000, Weisberg 2005). To implement k-fold cross-validation, we randomly divided the policy action data among four cross-validation folds using Huberty's rule (Huberty 1994). We used all possible sets of three folds to fit the predictive model. Employing multi-model averaging, we then used the model to predict the fourth withheld fold. Results of 100 iterations of this process, each with a new random allocation of data across the folds, were averaged to avoid dependency on a single random allocation of data. We then calculated a Pearson correlation between predicted values and the observed number of policy actions. The Pearson correlation was used to assess the performance of our final model. Because validation results can be sensitive to the binning method (Boyce et al. 2002), we applied and compared the results using a quantile binning method for 4, 10, and 20 bins. We also calculated adjusted  $D^2$  which is a measure of the amount of deviance the model accounts for adjusted by the number of observations and the number of model parameters (Guisan and Zimmermann 2000, Weisberg 2005). Adjusted  $D^2$  allows direct comparison among different models. Adjusted  $D^2$  was calculated using the modEvA package (Barbosa et al. 2016), and cross-validation was implemented using custom code in the R statistical software (R Core Team 2016).

## RESULTS

### *Congressional policy activity*

Our search of FDsys for policy documents identified 421 documents related to IWPs (Fig. 1). The policy documents represented three primary policy stages of increasing policy activity described by Anderson (1984): issue emergence and problem formation, agenda setting, and policy formulation and implementation

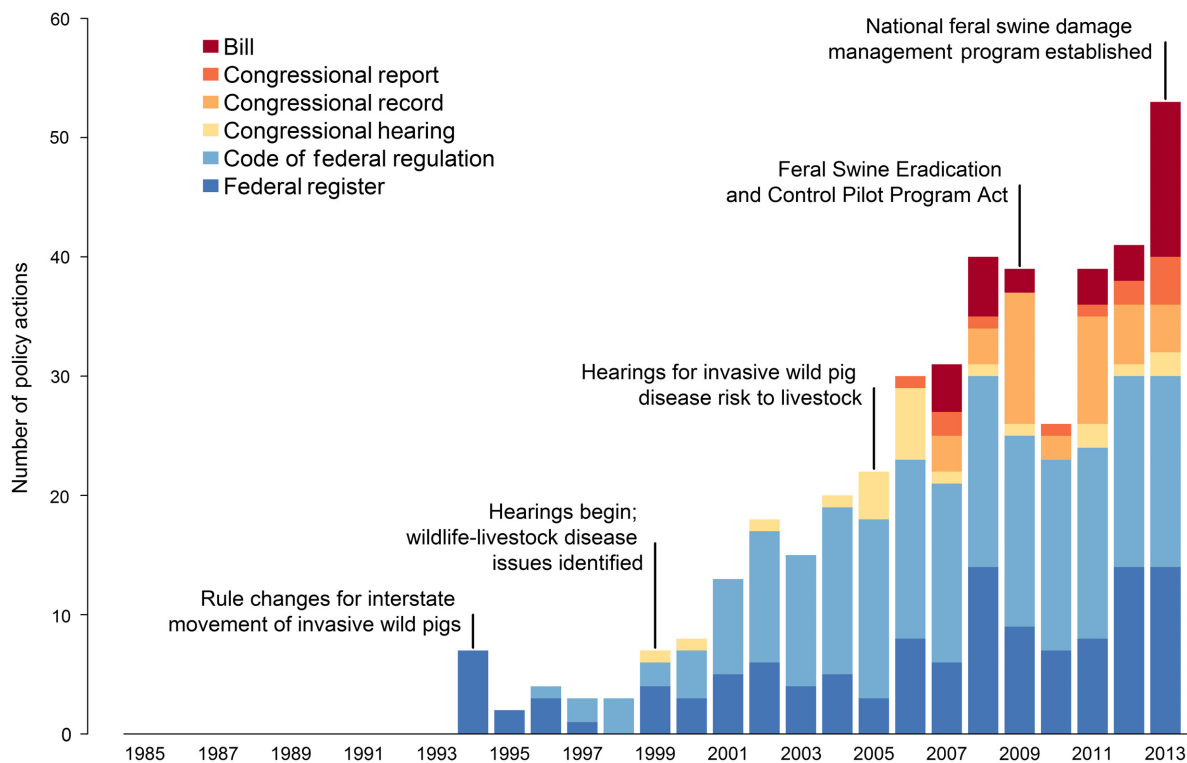


Fig. 1. Congressional policy activity and major policy milestones for invasive wild pigs (IWPs) from 1985 through 2013. Blue colors represent regulatory policy activity associated with changes to the code of federal regulations and federal register. Yellow and orange colors represent the agenda setting policy stage and include activity associated with congressional hearings, reports, and record. Red indicates the policy formation and implementation stage and includes bills addressing IWP policy.

(Appendix S1). The period from 1985 to 1993 showed no observed policy activity followed by a brief period of regulatory activity from 1994 to 1998 (e.g., changes to the federal register and the code of federal regulations), indicating that IWP policy was not yet formally present on institutional agendas and the issue was still emerging (Anderson 1984, Baumgartner and Jones 1991). From 1999 to 2006, policy activity on IWPs began in the form of congressional hearings, indicating that the topic of IWPs had reached the institutional agendas of policy makers (Baumgartner and Jones 1991, 2010). The last stage was dominated by policy formulation and implementation from 2007 to 2013 which accounted for 64% of the total policy activity and comprised both regulatory and distributive policies (i.e., allocation of fiscal resources to address specific issues related to IWPs) and culminated in the establishment of a national program to address IWP damage.

#### *Invasive wild pig print media*

We identified 980 unique articles from 452 newspapers related to IWPs between 1985 and 2013 (Appendix S2: Fig. S1). The number of articles, number of newspapers, and number of states with newspaper articles were relatively constant prior to 1998 with a rapid increase in articles, newspapers, and states after 1999. This period from 1999 to 2013 accounted for 96% of articles and 85% of newspapers. The number of states with wild swine-related newspaper articles continued to increase throughout the study period with 47 states having at least one article.

#### *Co-occurrence of invasive wild pigs and agriculture*

The co-occurrence of IWPs and agriculture expanded at an increasing rate from 1959 until 2013 and was best approximated by a logistic model (Table 1). For our study period, the

Table 1. Candidate models used to estimate the county-scale co-occurrence of invasive wild pigs and agricultural producers that was used as a predictor in the policy models.

Candidate models	df	AIC <sub>c</sub>	ΔAIC <sub>c</sub>	Akaike weight	Adjusted R <sup>2</sup>
Logistic	7	-58.04	0.00	$7.63 \times 10^1$	0.99
Linear	7	-36.31	21.73	$1.46 \times 10^5$	0.92
Exponential	7	-27.74	30.30	$2.01 \times 10^7$	0.99
Power	7	-27.16	30.88	$1.51 \times 10^7$	0.99

Note: The best approximating model in the candidate set of models was a logistic model and had good predictive capacity with an adjusted  $R^2 = 0.99$ . AIC<sub>c</sub>, Akaike information criterion with a correction for small sample size.

national proportion of agricultural producers in regions with IWPs increased from 0.17 in 1985 to 0.41 in 2013 (Fig. 2B) and is similar to changes in co-occurrence of domestic animal production and IWPs found in at least one other study (Miller et al. 2017). This represented an annual rate of increase of 1.01 (standard deviation < 0.01) in the co-occurrence of agricultural producers and IWPs during this period. Based on the strong predictive capacity of this distribution (adjusted  $R^2 = 0.99$ ), it was used as a predictor in the policy models to represent the annual number of agricultural producers potentially impacted by IWPs and provided a surrogate variable for changes in institutional pressure potentially resulting from interest group activity (i.e., lobbying).

#### Policy models

Based on the final inferential model, policy activity was most strongly associated with the number of states with newspaper articles, media source tone, newspaper article tone, and the number of agricultural producers co-occurring with IWPs (Tables 2, 3). Covariates representing each of these four factors had high AIC<sub>c</sub> weights of evidence and 95% confidence intervals that did not include zero indicating high predictive importance. The final model accounted for most of deviance with an adjusted  $D^2$  of 0.89. Cross-validation indicated that the final model had strong predictive capacity. The quantile binning method produced similar Pearson correlations of 0.969 (4 bins), 0.915 (10 bins), and 0.957 (20 bins) between predicted policy actions and the observed policy actions.

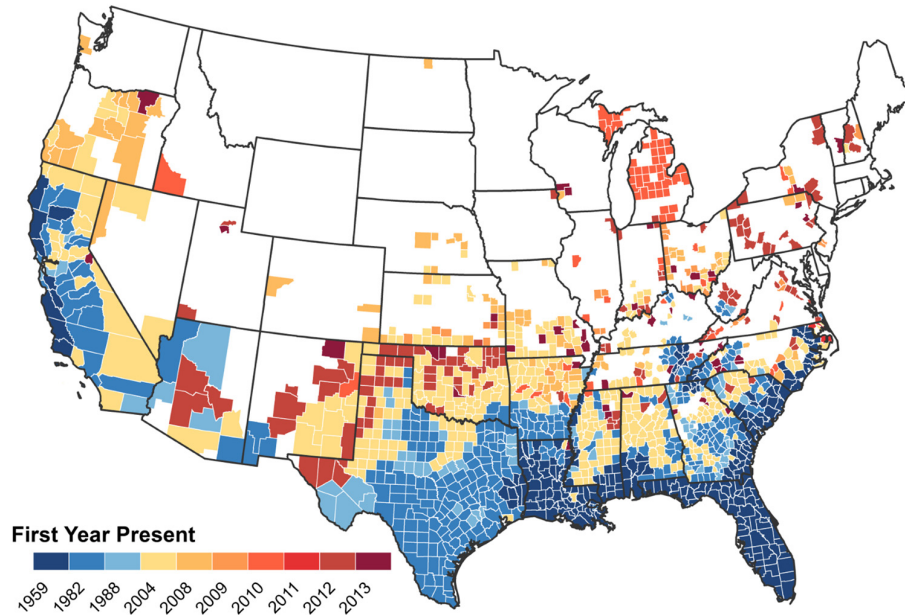
Parameter estimates, odds ratios, unconditional confidence intervals, and AIC<sub>c</sub> weights for the

predictor variables considered are presented in Table 3. The number of states with IWP-related newspaper articles was a positive predictor of IWP policy activity (odds ratio = 2.08). For every additional five states with newspaper headlines related to IWPs, there was a 3.65% increase in the number of policy actions. Increasing negative tone of the number of newspaper articles (odds ratio = 1.95) and the number of media sources (odds ratio = 1.14) increased the number of IWP policy actions. That is, for every 10 negative newspaper articles and 10 negative media sources, IWP policy activity increased by 6.7% and 1.3%. The number of agricultural producers in regions with IWPs was the most significant predictor of policy actions (odds ratio = 4.09); that is, for every 1% increase in the proportion of agriculture in regions with IWPs, policy activity increases by 41%. The amount of agriculture in wild swine regions was also a significant predictor of livestock (odds ratio = 4.08)- and crop-specific (odds ratio = 3.43) policy activity for IWPs. Fig. 3 illustrates the functional relationship between increasing co-occurrence of agriculture and IWPs and the resulting change in IWP policy activity.

The predicted contribution of the four most important predictors to policy activity changed across the 29 yr evaluated and differed for the three policy stages identified (Fig. 4; Appendix S1: Fig. S1). During the problem formation stage from 1985 to 1998, all media predictors contributed greater to policy activity than agriculture ( $P$ -values < 0.001) and source tone contributed more than either article tone or states with media ( $P$ -values < 0.001; Appendix S4). There was no difference in the mean contribution among the predictors during the policy agenda setting stage from 1999 to 2006 ( $P$ -values > 0.05). During the policy formation and implementation stage from 2007 to 2013, agriculture contributed more ( $P$ -values < 0.05) to policy activity compared to media predictors and there was no difference in the contribution among media predictors ( $P$ -values > 0.05). Livestock-specific policy activity was greater ( $P$ -values < 0.05) than crop policy activity across all years. The mean annual predicted contribution of agriculture to policy activity varied the most, with a 54.9% change from 5.5% of policy activity in 1985 to 60.7% of policy activity in 2013. Both media source and newspaper article tone had declining



## A) Geographic distribution of invasive wild pigs



## B) Co-occurrence of invasive wild pigs and agriculture

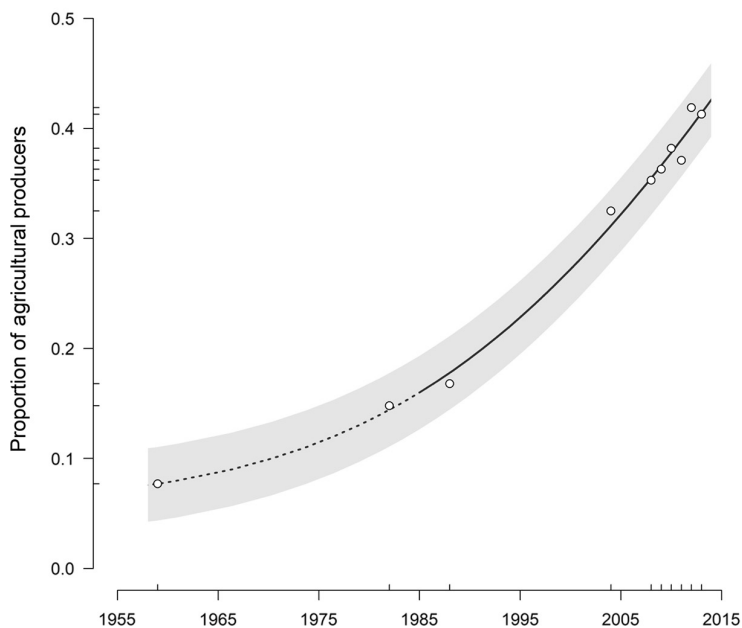


Fig. 2. Change in distribution of invasive wild pigs (IWPs) and co-occurrence with agriculture in the United States. Panel A illustrates the change in the geographic distribution of IWPs in the United States. Years indicate the first year IWPs were identified within the county based on the Southeastern Cooperative Wildlife Disease Study data. Blue scaled colors represent historical range from 1959 until 1988. Yellow and orange scaled colors represent contemporary range from 2004 until 2013. Panel B reports the increase in county-level co-occurrence of IWPs and agriculture. Circles represent observed proportion of counties in the United States in which IWPs and agriculture co-occur. Black line (solid and dotted) denotes logistic model estimated mean, and gray band is the

(Fig. 2. *Continued*)

95% prediction interval. Solid line indicates the estimated mean used as a predictor for the years of our study—1985 to 2013. The annual rate of increase in Panel B was estimated as 1.01 (standard deviation < 0.01) from 1959 to 2013 with the estimated inflection year being 2034 with 69.9% of agriculture co-occurring with IWPs. The model had good predictive capacity having an adjusted  $R^2 = 0.99$ .

Table 2. Candidate set of models used in the model averaging procedure to generate the final inferential model.

Model	K	$\Delta AIC_c$	$AIC_c$ weight
Intercept × agriculture × no. states × article tone × source tone	5	0.00	0.313
Intercept × agriculture × no. articles × no. sources × no. states × article tone	6	0.70	0.221
Intercept × agriculture × no. articles × no. states × article tone × source tone	6	0.89	0.201
Intercept × agriculture × no. sources × no. states × article tone × source tone	6	1.74	0.131
Intercept × agriculture × no. articles × no. sources × no. states × article tone × source tone	7	2.68	0.082
Intercept × agriculture × no. states × article tone	4	5.40	0.021
Intercept × agriculture × no. articles × no. sources × no. states	5	5.61	0.019
Intercept × agriculture × no. articles × no. states × article tone	5	6.55	0.012

*Notes:* These eight models account for 99.9% of the  $AIC_c$  weight given the candidate set of 64 models. The null model (intercept only) was ranked as the least informative model, and the top model was 485  $AIC_c$  units better (i.e., lower) than the null model, suggesting the selected covariates approximated the data well.  $AIC_c$ , Akaike information criterion with a correction for small sample size.

Table 3. Model-averaged parameter estimates for the final inferential model describing the relationship between invasive wild pig (IWP) policy activity, news media, and the amount of agriculture co-occurring with IWPs.

Parameter	Odds ratio	Estimate	Unconditional standard error	Unconditional confidence interval		Akaike information criterion with a correction weight
				2.5%	97.5%	
All agriculture	4.09	1.41	0.25	1.32	1.50	1
Livestock agriculture	4.08	1.41	0.34	1.32	1.49	1
Crop agriculture	3.43	1.23	0.53	0.96	1.51	0.92
No. states with news media	2.08	0.73	0.17	0.69	0.78	1
Newspaper article tone	1.95	0.67	0.23	0.59	0.75	0.98
Media source tone	1.14	0.13	0.08	0.11	0.15	0.73
No. newspaper articles	1.98	0.68	1.04	−0.88	2.25	0.53
No. media sources	0.53	−0.64	1.36	−2.72	1.44	0.46

mean annual contribution to policy activity, declining 37.5% and 17.2%. Combined media source and article tone contributed on average 30.5% of policy activity in 2013 compared to a combined 71.7% in 1985. The number of states with newspaper articles on average contributed a consistent amount annually (22.8%) to policy activity across all years.

## DISCUSSION

Our models found a linkage between policy activity and four predictors representing number

of states with media, media tone, and agriculture. These predictors have been described in previous studies as representing policy image salience, policy image coalescence, and institutional pressures (Elder and Cobb 1983, Kingdon and Thurber 1984, Weart 1988, Gilliam and Iyengar 2000, Callaghan and Schnell 2001, Soroka 2003, Sapat 2004, Walgrave et al. 2008, Baumgartner and Jones 2010). We found the predicted contribution of these predictors to policy activity changed across the 29 yr analyzed and differed for the three policy stages indicating the development of federal IWP policy went through a

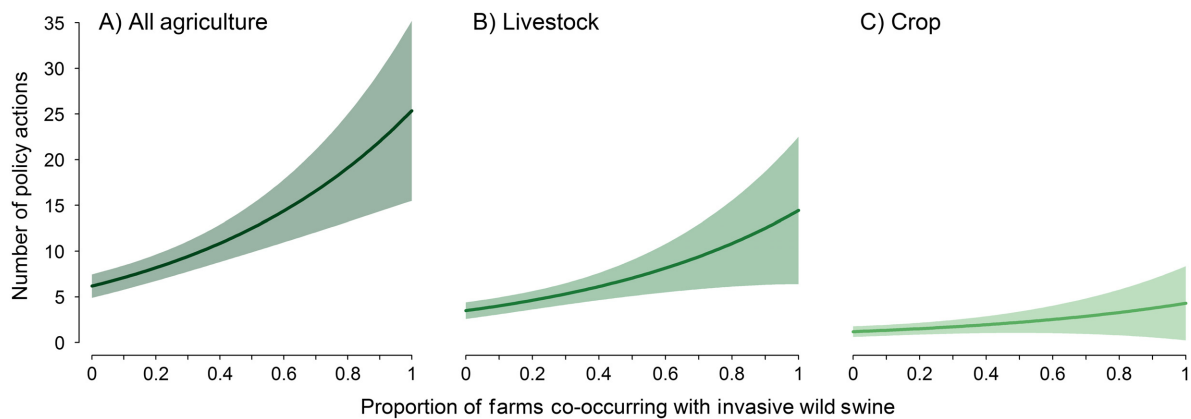


Fig. 3. Mean functional relationship between invasive wild pig (IWP) congressional policy activity and the national proportion of agriculture co-occurring IWPs in the United States. Solid black line indicates predicted mean relationship, and gray band indicates unconditional 95% confidence interval. Panels represent the functional relationship for (A) all IWP policy activity, (B) IWP policy activity specific to livestock agriculture, and (C) IWP policy activity specific to crop agriculture.

continuum of policy development. Understanding how these predictors, which serve as proxy measures of mechanisms influencing policy processes, contribute to policy development can provide a better understanding of important latent processes that give rise to national policies. This in turn can support the development of programs and policies that best address the social issues underlying these problems.

The emergence of invasive IWPs as a policy issue was characterized by decades of general inattention and no observed policy activity (Fig. 1; Appendix S1). Media predictors contributed most to policy activity during the first stage of policy activity and may have acted to increase policy image salience and coalescence (Appendix S1: Fig. S1). Our results suggest that for IWP policy, increasingly negative news media may have acted as a mechanism for influencing initial policy activity. Previous studies have proposed that increasing news media, specifically negative news media, indicates increasing public policy image coalescence and policy issue salience (Jones and Baumgartner 2004, Baumgartner and Jones 2010). Salience of social issues in public discourse may determine whether or not issues expand on the government agenda (Koch-Baumgarten and Voltmer 2010). For example, issue salience can determine voter turnout and choice preferences (Becker 1977). Our analysis suggests that print news media may have

provided a method for establishing issue salience and coalescence, serving to bring the issue to the governmental agenda.

An indicator of policy image salience and coalescence is whether the policy issue is being discussed in formal hearings (Baumgartner and Jones 2010). The first congressional hearing addressing IWPs was conducted in 1999 and addressed issues related to U.S. Department of Agriculture's (USDA) policy for addressing wildlife transmission of diseases to domestic livestock, specifically brucellosis in IWPs (Senate 1999). This has been identified as a potentially significant issue facing agriculture and wildlife management (Miller et al. 2013, 2017, Bevins et al. 2014). However, congressional hearings did not begin in earnest until 2005 and 2006 when 10 hearings were held—over double from the previous five years. Hearings in these two years were largely related to potential animal agricultural impacts associated with classical swine fever, a swine disease with international trade implications for the U.S. swine industry (Paarlberg et al. 2009). These hearings coincided with a switch in the relative contribution of news media predictors and agriculture to policy activity, indicating that print news media likely played an important role in forming the IWP policy image early in the policy process but interest groups played a more important role in formulating policies that would be implemented.

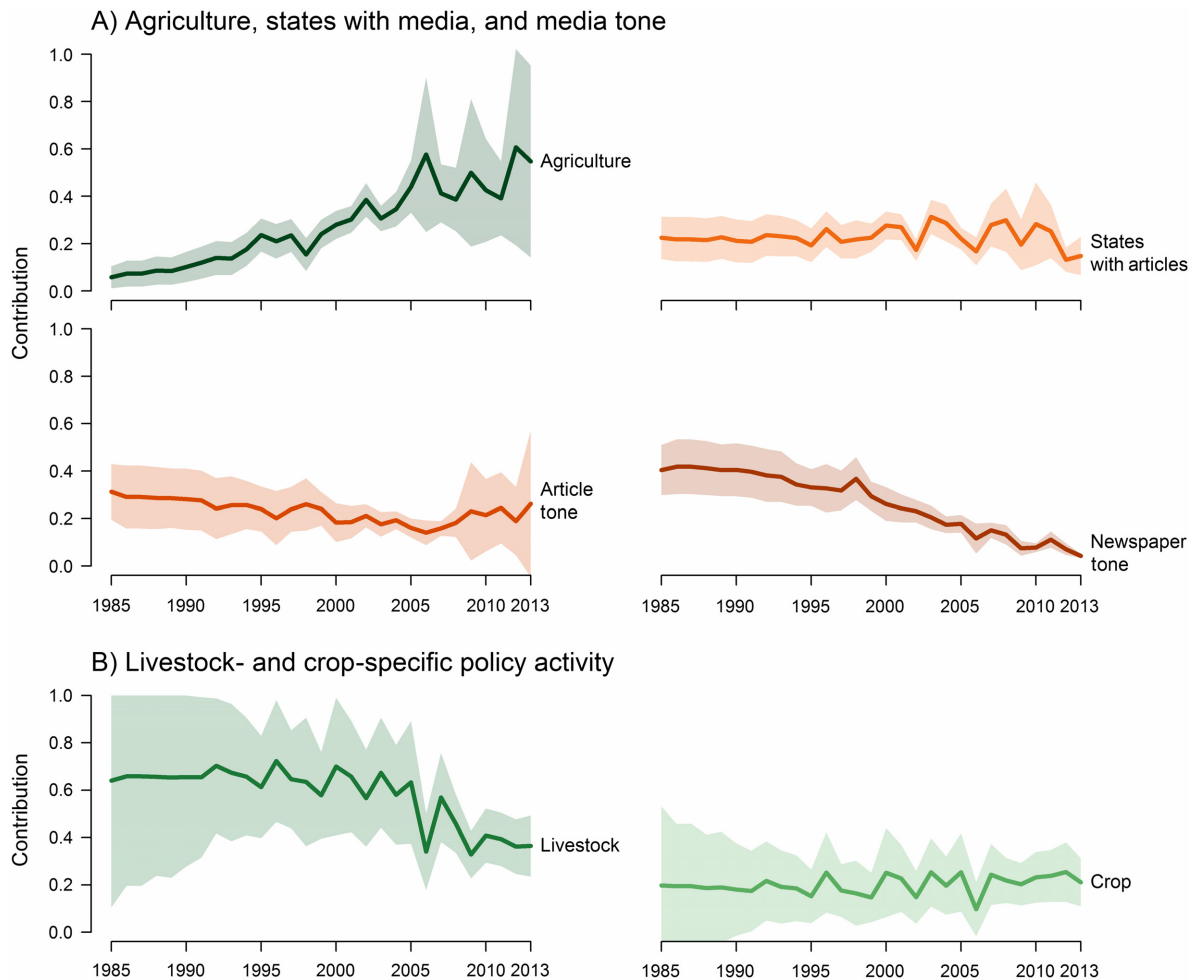


Fig. 4. The model-predicted change in relative contribution of predictors to annual policy activity for invasive wild pigs (IWPs). Panel (A) contrasts the changes in the annual contribution of agriculture, article and newspaper tone, and number of states with newspaper articles. Panel (B) describes the relative contribution of livestock- and crop-specific activity to overall IWP policy. Solid lines indicate mean contribution, and shaded region represents 95% confidence interval.

Once the issue of invasive IWPs was on the policy agenda and policy solutions were being developed, we found that the amount of agriculture in regions with IWPs was the most important predictor of the frequency of policy activity (Fig. 4). The relative contribution to policy activity shifted from primarily media related to primarily agriculture after 2006 (Appendix S1: Fig. S1 and Appendix S4). This indicates that agriculture may have been the primary driver influencing the development of potential policy solutions. Investigation of the policy documents revealed that there was an increased focus of

IWP policy discourse on agricultural damage concerns indicating that agricultural interests had influence in both setting the policy agenda and the formation of policy solutions. While agriculture contributed a relatively small amount to overall policy activity during the problem formation stage prior to policy image coalescence, livestock agriculture contributed far greater than crop agriculture (Figs. 3, 4B).

Previous studies have proposed that interest groups that are able to define the problem early in the issue emergence and problem formation stage tend to control future policy development even if

new interest groups enter the policy arena (Schattschneider 1960, Baumgartner et al. 2009). Livestock agriculture involvement in policy formation may be driven by the potential for large economic losses—US\$5.8 billion—associated with a single livestock disease outbreak involving IWPs (foot and mouth disease) compared with the currently estimated US\$800 million in crop damage attributed to IWPs (Paarlberg et al. 2002, Pimentel et al. 2002, Pimentel 2007, Anderson et al. 2016). Broadly this indicates that those interest groups with the greatest potential risk for damage had the greatest impact on the formation of IWP policy (Baumgartner et al. 2009). This effect may be even greater early in the emergence of an issue when fewer interest groups are involved and the ability for a single group to define the problem and the resulting policy is greater (Schattschneider 1960, Baumgartner et al. 2009).

Our approach may provide insights into the drivers of policy activity for wildlife and for invasive species such as feral horses or invasive fish, both of which receive significant media attention, are conflict-ridden, and impact wildlife and agriculture (Kincaid and Fletcher 2017, Kokotovich and Andow 2017). Using our approach for existing policy areas such as these may improve policy maker understanding of the drivers and importance of different interest groups over time. This can then be used as a tool for improving stakeholder engagement or identifying interest groups that influence policy but have not been formally engaged by policy makers. A potentially more important application of our approach is to newly emerging policy areas in wildlife and invasive species. Early engagement by policy makers can be critical in defining successful policies before a policy area becomes gridlocked. In addition, previous research indicates that interest groups who engage early in a policy area often determine policy outcomes (Sapat 2004). Using our approach in combination with structured decision-making techniques (Estévez et al. 2015) or frameworks that identify stakeholder characteristics and synthesize public preferences (Sharp et al. 2011) may improve proactive policy development by agencies avoiding policy development that is influenced by a single interest group.

This is the first analysis we are aware of that examines the relative contributions of media and

institutional pressures on the development of invasive species policies at the Federal scale. In the case of IWPs, our model suggests that changes in co-occurrence of IWPs and agriculture over the last 29 yr, likely resulting in increased problem severity (i.e., damage), contributed most to the eventual development of policy to mitigate the problems. This likely resulted from increasing industry pressure on agricultural agencies to protect or mitigate damage associated with IWPs. This was evidenced by both our model predictions and the amount of consideration given to agricultural damage, specifically damage to livestock, caused by IWPs in congressional hearings and reports (GPO 2001, 2013). Livestock agriculture likely contributed more to the development of policy and has potential implications for implementation of programs to address IWP damage. Given the significant contribution of livestock agriculture to the formation and implementation of policy, national program objectives such as surveillance of IWPs for livestock diseases of concern and mitigation of risks associated with transmission of disease from IWPs to livestock are of particular importance and will require careful planning and implementation.

This study is based on a large search of government documents and news media data; therefore, there are inherent constraints on inference. While our objective was to investigate the relative contribution of media and institutional pressures on national invasive species policy development, there are other potential drivers of policy activity. Previous studies have found that interest group access to congressional committees and advisory committees is influential in the development of policy (Balla and Wright 2001), although this is also influenced by the number of stakeholders in a policy area (Baumgartner et al. 2009). In our study, we only considered three actors—livestock agriculture, crop agriculture, and the public—although there were likely additional actors that contributed to the generation of national policy such as conservation- or sportsmen-focused interest groups. While IWP policy appears to have gone through a continuum of policy development, there is no standard quantitative approach for determining policy phases and investigating other policy processes may be of value. We did not consider policy processes such as policy diffusion (Berry and Berry 1999)

or policy entrepreneurs (Mintrom and Norman 2009) that may have influenced national policy activity. These policy processes may also have contributed to the observed policy activity. While our study provides insights into drivers of policy activity addressing the invasive species interface, it could be enhanced by investigating these other mechanisms that may also be important in creation of policy. Additional extensions to our study could investigate the relative contribution of science (e.g., peer-reviewed scientific papers) to policy activity compared with interest groups representing agriculture, conservation, and sportsmen. This may be of particular importance to better understand at which policy stage scientific findings have the greatest influence on policy development.

Given the scarcity of rigorous quantitative policy work for problems resulting from the interface of invasive species, wildlife, and agriculture, greater attention is needed to disentangle the mechanisms driving policy development. Although research has examined the influence of media on policy development (Baumgartner and Jones 2010), there remains a lack of information linking measures of public perception and institutional pressures specifically for the interface of wildlife, invasive species, and agriculture. Such information could provide valuable insight into the variability in policy approaches addressing these interactions. Analyses, such as the one we conducted, may provide improved understanding of which stakeholders have contributed most to policy activity and may be especially useful in better understanding complex policy systems. Additionally, our approach may also provide early insight into emerging policy areas enabling proactive policy development by agencies or early engagement by scientists to find solutions before the policy area becomes gridlocked. In addition, linking the results of analyses such as ours with policy and program evaluation could provide a means of determining whether the implemented policy and program match the original determinants of the policy. Policy makers can in turn use analyses such as these to better design policies that align with public interests and policy benefactors ensuring long-term success of policies by incorporating all interests making programs more effective (Loomis and Helfand 2001).

## ACKNOWLEDGMENTS

We acknowledge the diligent efforts of research librarian Mary Foley who provided guidance on database searches. We also thank Drs. Robert Duffy, Sandra Davis, Dana Cole, Troy Bigelow, Dan Grear, and Steve Sweeney for review and suggestions concerning hypotheses evaluated, analysis, and discussion of findings. We also thank Dr. Terry Messmer and other anonymous reviewers for thoughtful suggestions that have improved this manuscript.

## LITERATURE CITED

- Anderson, J. E. 1984. Public policy and politics in America. Harcourt Brace, New York, New York, USA.
- Anderson, A., C. Sloodmaker, E. Harper, J. Holderieath, and S. A. Shwiff. 2016. Economic estimates of feral swine damage and control in 11 US states. *Crop Protection* 89:89–94.
- Balla, S. J., and J. R. Wright. 2001. Interest groups, advisory committees, and congressional control of the bureaucracy. *American Journal of Political Science* 45:799–812.
- Barbosa, A., J. Brown, and R. Real. 2016. modEvA – an R package for model evaluation and analysis. R Foundation for Statistical Computing, Vienna, Austria.
- Barrilleaux, C., C. Reenock, and M. Souva. 2017. Democratic policymaking: an analytic approach. Cambridge University Press, New York, New York, USA.
- Barrios-Garcia, M. N., and S. A. Ballari. 2012. Impact of wild boar (*Sus scrofa*) in its introduced and native range: a review. *Biological Invasions* 14:2283–2300.
- Barton, K., and M. K. Barton. 2015. MuMIn – multi-model inference package. R Foundation for Statistical Computing, Vienna, Austria.
- Baumgartner, F. R., J. M. Berry, M. Hojnacki, B. L. Leech, and D. C. Kimball. 2009. Lobbying and policy change: who wins, who loses, and why. University of Chicago Press, Chicago, Illinois, USA.
- Baumgartner, F. R., and B. D. Jones. 1991. Agenda dynamics and policy subsystems. *Journal of Politics* 53:1044–1074.
- Baumgartner, F. R., and B. D. Jones. 2010. Agendas and instability in American politics. University of Chicago Press, Chicago, Illinois, USA.
- Becker, L. B. 1977. The impact of issue salience. Pages 121–131 in D. L. Shaw and M. E. McCombs, editors. The emergence of American political issues: the agenda setting function of the press. West Publishing, Saint Paul, Minnesota, USA.
- Berry, F. S., and W. D. Berry. 1999. Innovation and diffusion models in policy research. Theories of the policy process. Westview Press, Boulder, Colorado, USA.

- Bevins, S. N., K. Pedersen, M. W. Lutman, T. Gidlewski, and T. J. Deliberto. 2014. Consequences associated with the recent range expansion of nonnative feral swine. *BioScience* 64:291–299.
- Boyce, M. S., P. R. Vernier, S. E. Nielsen, and F. K. Schmiegelow. 2002. Evaluating resource selection functions. *Ecological Modelling* 157:281–300.
- Brewer, G. D., and P. DeLeon. 1983. *The foundations of policy analysis*. Brooks-Cole Publishing, Pacific Grove, California, USA.
- Brook, R. K., and F. M. V. Beest. 2014. Feral wild boar distribution and perceptions of risk on the central Canadian prairies. *Wildlife Society Bulletin* 38:486–494.
- Burnham, K. P., and D. R. Anderson. 2002. Model selection and multimodel inference: a practical information-theoretic approach. Springer, New York, New York, USA.
- Burnham, K. P., and D. R. Anderson. 2004. Multimodel inference understanding AIC and BIC in model selection. *Sociological Methods & Research* 33:261–304.
- Burnham, K. P., D. R. Anderson, and K. P. Huyvaert. 2011. AIC model selection and multimodel inference in behavioral ecology: some background, observations, and comparisons. *Behavioral Ecology and Sociobiology* 65:23–35.
- Callaghan, K., and F. Schnell. 2001. Assessing the democratic debate: how the news media frame elite policy discourse. *Political Communication* 18:183–213.
- Caplenor, C. A., N. C. Poudyal, L. I. Muller, and C. Yoest. 2017. Assessing landowners' attitudes toward wild hogs and support for control options. *Journal of Environmental Management* 201:45–51.
- Centner, T. J., and R. M. Shuman. 2015. Governmental provisions to manage and eradicate feral swine in areas of the United States. *Ambio* 44:121–130.
- Corn, J. L., and T. R. Jordan. 2017. Development of the national feral swine map, 1982–2016. *Wildlife Society Bulletin* 41:758–763.
- Crowley, S. L., S. Hinchliffe, and R. A. McDonald. 2017. Conflict in invasive species management. *Frontiers in Ecology and the Environment* 15:133–141.
- Dodds, P. S., E. M. Clark, S. Desu, M. R. Frank, A. J. Reagan, J. R. Williams, L. Mitchell, K. D. Harris, I. M. Kloumann, and J. P. Bagrow. 2015. Human language reveals a universal positivity bias. *Proceedings of the National Academy of Sciences of the USA* 112:2389–2394.
- Dodds, P. S., K. D. Harris, I. M. Kloumann, C. A. Bliss, and C. M. Danforth. 2011. Temporal patterns of happiness and information in a global social network: Hedonometrics and Twitter. *PLoS ONE* 6: e26752.
- EBSCO. 2016. EBSCO newspaper source database. <https://www.ebsco.com>
- Elder, R. W., and C. D. Cobb. 1983. Participation in American politics: the dynamics of agenda-building. Page 196. John Hopkins University Press, Baltimore, Maryland, USA.
- Entman, R. M. 1993. Framing: towards clarification of a fractured paradigm. *McQuail's Reader in Mass Communication Theory* 43:390–397.
- Estévez, R. A., C. B. Anderson, J. C. Pizarro, and M. A. Burgman. 2015. Clarifying values, risk perceptions, and attitudes to resolve or avoid social conflicts in invasive species management. *Conservation Biology* 29:19–30.
- Funkhouser, G., and E. F. Shaw. 1990. How synthetic experience shapes social reality. *Journal of Communication* 40:75–87.
- Gilliam, F. D. Jr, and S. Iyengar. 2000. Prime suspects: the influence of local television news on the viewing public. *American Journal of Political Science* 44:56–573.
- GPO. 2001. Agriculture, rural development, food and drug administration, and related agencies appropriations for 2001. Page 461 Subcommittee on Agriculture, Rural Development, Food and Drug Administration, and Related Agencies. U.S. Government Printing Office, Washington, D.C., USA.
- GPO. 2013. Agriculture, rural development, food and drug administration, and related agencies appropriations for 2014. Page 487 Subcommittee on Agriculture, Rural Development, Food and Drug Administration, and Related Agencies. U.S. Government Printing Office, Washington, D.C., USA.
- GPO. 2014. Federal Digital System (FDsys). United States Government Printing Office, Washington, D.C., USA.
- Guisan, A., and N. E. Zimmermann. 2000. Predictive habitat distribution models in ecology. *Ecological Modelling* 135:147–186.
- Hanson, R., and L. Karstad. 1959. Feral swine in the southeastern United States. *Journal of Wildlife Management* 23:64–74.
- Hu, M., and B. Liu. 2004. Mining and summarizing customer reviews. Pages 168–177 in *Proceedings of the Tenth ACM SIGKDD International Conference on Knowledge Discovery and Data Mining*. ACM, Seattle, Washington, USA.
- Huberty, C. J. 1994. *Applied discriminant analysis*. Wiley, New York, New York, USA.
- Izac, A., and P. O'Brien. 1991. Conflict, uncertainty and risk in feral pig management Australian approach. *Journal of Environmental Management* 32:1–18.
- Jones, B. D., and F. R. Baumgartner. 2004. Representation and agenda setting. *Policy Studies Journal* 32:1–24.
- Jones, B. A., D. Grace, R. Kock, S. Alonso, J. Rushton, M. Y. Said, D. McKeever, F. Mutua, J. Young, and J.

- McDermott. 2013. Zoonosis emergence linked to agricultural intensification and environmental change. *Proceedings of the National Academy of Sciences of the USA* 110:8399–8404.
- Keiter, D. A., J. J. Mayer, and J. C. Beasley. 2016. What is in a “common” name? A call for consistent terminology for nonnative *Sus scrofa*. *Wildlife Society Bulletin* 40:384–387.
- Kincaid, A. T., and A. J. Fletcher. 2017. Policy problems, publics, and the power of definition: competing discourses and the case of Alberta’s free-roaming horses. *Canadian Geographer/Le Géographe canadien* 61:360–374.
- Kingdon, J. W., and J. A. Thurber. 1984. *Agendas, alternatives, and public policies*. Little, Brown and Company, Boston, Massachusetts, USA.
- Kleinbaum, D., L. Kupper, A. Nizam, and E. Rosenberg. 2013. *Applied regression analysis and other multivariable methods*. Nelson Education, Belmont, California, USA.
- Koch-Baumgarten, S., and K. Voltmer. 2010. *Public policy and the mass media: the interplay of mass communication and political decision making*. Routledge, London, UK.
- Kohavi, R. 1995. A study of cross-validation and bootstrap for accuracy estimation and model selection. *International Joint Conference on Artificial Intelligence* 14:1137–1145.
- Kokotovich, A. E., and D. A. Andow. 2017. Exploring tensions and conflicts in invasive species management: the case of Asian carp. *Environmental Science & Policy* 69:105–112.
- Krebs, J., R. Anderson, T. Clutton-Brock, C. Donnelly, S. Frost, W. Morrison, R. Woodroffe, and D. Young. 1998. Badgers and bovine TB: conflicts between conservation and health. *Science* 279:817–818.
- LexisNexis. 2016. LexisNexis academic database. <http://web.lexis-nexis.com>
- Liu, B. 2015. *Sentiment analysis: Mining opinions, sentiment, and emotion in text*. Cambridge University Press, Cambridge, England.
- Lodge, M., and K. Matus. 2014. Science, badgers, politics: advocacy coalitions and policy change in bovine tuberculosis policy in Britain. *Policy Studies Journal* 42:367–390.
- Loomis, J., and G. E. Helfand. 2001. *Environmental policy analysis for decision making*. Kluwer Academic, Amsterdam, The Netherlands, New York, New York, USA.
- Mayer, J., and I. Brisbin. 1991. *Wild pigs in the United States: their life history, morphology and current status*. University of Georgia Press, Athens, Georgia, USA.
- McBeth, M. K., and E. A. Shanahan. 2004. Public opinion for sale: the role of policy marketers in Greater Yellowstone policy conflict. *Policy Sciences* 37:319–338.
- McClure, M. L., C. L. Burdett, M. L. Farnsworth, M. W. Lutman, D. M. Theobald, P. D. Riggs, D. A. Grear, and R. S. Miller. 2015. Modeling and mapping the probability of occurrence of invasive wild pigs across the contiguous United States. *PLoS ONE* 10: e0133771.
- McClure, M. L., C. L. Burdett, M. L. Farnsworth, S. J. Sweeney, and R. S. Miller. 2018. A globally-distributed alien invasive species poses risks to United States imperiled species. *Scientific Reports* 8:5331.
- McCombs, M. E., and D. L. Shaw. 1972. The agenda-setting function of mass media. *Public Opinion Quarterly* 36:176–187.
- Messmer, T. A. 2009. Human–wildlife conflicts: emerging challenges and opportunities. *Human-Wildlife Conflicts* 3:10–17.
- Michel, N. L., M. P. Laforge, F. M. Van Beest, and R. K. Brook. 2017. Spatiotemporal trends in Canadian domestic wild boar production and habitat predict wild pig distribution. *Landscape and Urban Planning* 165:30–38.
- Miller, R. S., M. L. Farnsworth, and J. L. Malmberg. 2013. Diseases at the livestock–wildlife interface: status, challenges, and opportunities in the United States. *Preventive Veterinary Medicine* 110:119–132.
- Miller, R. S., and S. J. Sweeney. 2013. *Mycobacterium bovis* (bovine tuberculosis) infection in North American wildlife: current status and opportunities for mitigation of risks of further infection in wildlife populations. *Epidemiology and Infection* 141:1357–1370.
- Miller, R. S., S. J. Sweeney, C. Sloomaker, D. A. Grear, P. A. Di Salvo, D. Kiser, and S. A. Shwiff. 2017. Cross-species transmission potential between wild pigs, livestock, poultry, wildlife, and humans: implications for disease risk management in North America. *Scientific Reports* 7:7821.
- Mintrom, M., and P. Norman. 2009. Policy entrepreneurship and policy change. *Policy Studies Journal* 37:649–667.
- NewsBank. 2016. NewsBank NewsFile collection. <https://www.newsbank.com>
- Paarlberg, P. L., J. G. Lee, and A. H. Seitzinger. 2002. Potential revenue impact of an outbreak of foot-and-mouth disease in the United States. *Journal of the American Veterinary Medical Association* 220:988–992.
- Paarlberg, P. L., A. H. Seitzinger, J. G. Lee, and K. Mathews. 2009. Supply reductions, export restrictions, and expectations for hog returns in a potential classical swine fever outbreak in the United States. *Journal of Swine Health and Production* 17:155–162.



- Paini, D. R., A. W. Sheppard, D. C. Cook, P. J. De Barro, S. P. Worner, and M. B. Thomas. 2016. Global threat to agriculture from invasive species. *Proceedings of the National Academy of Sciences of the USA* 113:7575–7579.
- Pimental, D. 2007. Environmental and economic costs of vertebrate species invasions into the United States. Pages 2–8 *in* *Proceedings of an International Symposium: Managing Vertebrate Invasive Species*, US Department of Agriculture, Animal and Plant Health Inspection Service, Wildlife Services, National Wildlife Research Center, Fort Collins, Colorado, USA.
- Pimentel, D., L. Lach, R. Zuniga, and D. Morrison. 2002. Environmental and economic costs associated with non-indigenous species in the United States. Pages 285–303 *in* D. Pimentel, editor. *Biological invasions: economic and environmental costs of alien plant, animal, and microbe species*. CRC Press, New York, New York, USA.
- ProQuest. 2016. ProQuest newspaper database. <https://www.proquest.com/libraries/academic/databases/>
- R Core Team. 2016. R: a language and environment for statistical computing. R Foundation for Statistical Computing, Vienna, Austria.
- Rinker, T. W. 2013. qdap: quantitative discourse analysis package. Version 1.3.6. University at Buffalo, Buffalo, New York, USA.
- Sabatier, P. A., and C. M. Weible. 2014. *Theories of the policy process*. Avalon Publishing, New York, New York, USA.
- Sapat, A. 2004. Devolution and innovation: the adoption of state environmental policy innovations by administrative agencies. *Public Administration Review* 64:141–151.
- Schattschneider, E. E. 1960. *The Semisovereign people: a realist's view of democracy in America*. Holt, Rinehart, and Winston, New York, New York, USA.
- SCWDS. 2013. National feral swine distribution maps. In *National Feral Swine Mapping System*, editor. Southeastern Cooperative Wildlife Disease Study. University of Georgia, Athens, Georgia, USA.
- Senate. 1999. Agriculture, rural development, and related agencies appropriations for fiscal year 2000. Page 1433 *in* U. S. Senate, editor. *Subcommittee of the Committee on Appropriations United States Senate*. U.S. Government Printing Office, Washington, D.C., USA.
- Sharp, R. L., L. R. Larson, and G. T. Green. 2011. Factors influencing public preferences for invasive alien species management. *Biological Conservation* 144:2097–2104.
- Snow, N. P., M. A. Jarzyna, and K. C. VerCauteren. 2017. Interpreting and predicting the spread of invasive wild pigs. *Journal of Applied Ecology* 54:2022–2032.
- Soroka, S. N. 2003. Media, public opinion, and foreign policy. *International Journal of Press/Politics* 8:27–48.
- Tisdell, C. A. 1982. *Wild pigs: environmental pest or economic resource*. Pergamon Press Ltd, Cornell University, Ithaca, New York, USA.
- Turbelin, A. J., B. D. Malamud, and R. A. Francis. 2017. Mapping the global state of invasive alien species: patterns of invasion and policy responses. *Global Ecology and Biogeography* 26:78–92.
- USDA. 2013. Environmental impact statement; feral swine damage management. In USDA, editor. 78 FR 27937. Office of the Federal Register, National Archives and Records Administration, Federal Register Volume 78, Issue 92.
- USDA. 2014. Quick stats. National Agricultural Statistics Service, US Department of Agriculture, Washington, D.C., USA.
- Valliant, R., J. A. Dever, and F. Kreuter. 2013. *Practical tools for designing and weighting survey samples*. Springer, New York, New York, USA.
- Waithman, J. D., R. A. Sweitzer, D. Van Vuren, J. D. Drew, A. J. Brinkhaus, I. A. Gardner, and W. M. Boyce. 1999. Range expansion, population sizes, and management of wild pigs in California. *Journal of Wildlife Management* 63:298–308.
- Walgrave, S., S. Soroka, and M. Nuytemans. 2008. The mass media's political agenda-setting power a longitudinal analysis of media, parliament, and government in Belgium (1993 to 2000). *Comparative Political Studies* 41:814–836.
- Weart, S. 1988. *Nuclear fear: a history of images*. Harvard University Press, Cambridge, Massachusetts, USA.
- Weisberg, S. 2005. *Applied linear regression*. John Wiley & Sons, San Francisco, California, USA.
- Wild Hog Working Group. 2016. 2016 annual state summary report: Wild Hog Working Group. Southeastern Association of Fish and Game Agencies, Jackson, Mississippi, USA.

## SUPPORTING INFORMATION

Additional Supporting Information may be found online at: <http://onlinelibrary.wiley.com/doi/10.1002/ecs2.2379/full>